



**AERO**

MOUSE IVC GREEN LINE

- Revolutionary design for a better visibility
- Safer handling and superior ergonomics
- Eco-friendly Design
- Reduced footprint
- Exceptional filtration and enhanced containment for optimal animals and operators protection
- Standardized environment for best science and reproducible results



**HOUSING**



**TECNIPLAST**

*innovation through passion*<sup>SM</sup>



## HOUSING

### 1/ Revolutionary Design for a better visibility: easy daily check

A revolutionary design in the IVC racks: eliminating the need of the stainless steel uprights thank to the plastic-made runners AERO features the maximum visibility, making the daily check operations easier and quicker. The runners are made of a high-temperature linear polymer that offers excellent physical properties and chemical resistance products, with a further step ahead vs competition.

### 2/ Safer Handling and Superior Ergonomics: All Rounded Corners and Lightweight

Thanks to the rounded design of the corners AERO addresses the need of safer handling inside the animal facility avoiding the risk of injuries during the daily procedures. Lightweight has always been a differentiating feature of the Tecniplast racks and a reference in the market. The ergonomics is improved also thanks to the reduction of needed sustained force to move the rack: -31% than the previous generation of IVC racks.

### 3/ Eco-friendly Design

The new AERO has been developed with special considerations for environmental impacts during its whole life cycle. Tecniplast has created a new style rack through a cutting edge technology with an efficient manufacturing process, resulting in an overall less environmental impact product reducing welds (- 60% than the previous generation of racks) and stainless steel usage (- 10% than the previous generation of IVC racks). The use of recyclable materials is in line with the Tecniplast ISO:14001 environmental friendly certification.

### 4/ Reduced Footprint: High Density

1719 mm by 887 mm (67" by 35") overall dimensions for a 160 cages double sided rack make it a space saver IVC rack.

### 5/ Cage Airflow Design

A preference test has demonstrated that mice prefer cages having the air supply in the top. Inlets in the top prevent the animals from being exposed to airdrafts and consequently from potential anxious behaviour and stress. GM500 cage is the latest generation of IVC with a revolutionary airflow pattern that reduces the risk of discomfort and possible stress for the animals.

### 6/ Enhanced Containment and Filtration

The cage body features a silicone gasket with a silicon lip that fits snugly around the base, assuring an occlusive seal and an ideal containment when the top is fitted. This means that even when running in positive pressure, laboratory allergens are contained, protecting both staff and researchers. A large square filter (0.2 microns filter pores size) kept in place on the top of the cage by a filter retainer with silicon sealing also ensures the safety of inhabitants in case of power failure without compromising the protection.

### 7/ Easy Access

The latch-free tops requires a simple press on the cage's front button to open the cage. The half wire bar lid enables full access to each cage's contents without the need of removing it during the cage change operations and procedures.

### 8/ Cage Self-Locking System (CSS) & Visual Docking Indicator

The rack runners have built-in stoppers that fit the stopping lugs precisely, so each cage stops and locks silently into place automatically - and almost effortlessly. A visual indicator flags any cage that is not fully docked. When a cage is fitted properly into the rack, the flag disappears from view. (No flag? No problem!).

### 9/ External Self-centering Water Bottle

The cage top features a self-centering depression to accommodate an external water bottle. It's possible to remove or change bottles without disturbing or stressing the animals speeding up the procedure thank to the self-centering indentation. The water bottles feature a silicone o-ring for easy, perfect sealing and are fitted with a coneshaped AISI 316 stainless steel cap which maximize water availability.

### 10/ Easy & Smart Flow: the latest generation of Air Handling Units

Easy Flow and Smart Flow are the latest generation of air handling units: heat emission is 10% and power consumption 50% less than the old generation of AHUs. Microprocessor driven (Automatic constant flow rate and filter load compensation) they guarantee safety for animals, operators and the environment: Every single air handling unit manufactured is tested for filter integrity and HEPA filtration efficiency through the DOP test. The Easy flow is optimal in terms of simplicity of use. The Smart Flow features a new generation of touch screen control panels offering advanced setting features and enhanced flexibility.

**AERO**

## Environmental Friendly IVC Rack

New Revolutionary Design, Better Visibility, Eco-friendly

**1&3**



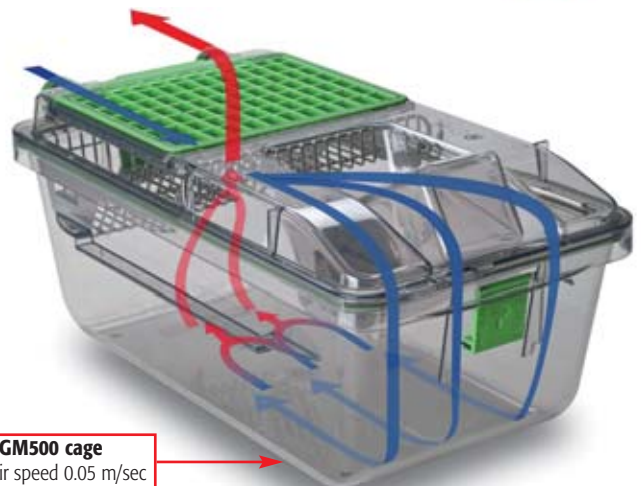
Improved Features for Safer Handling, Reduced Footprint

**2&4**



Cage airflow design

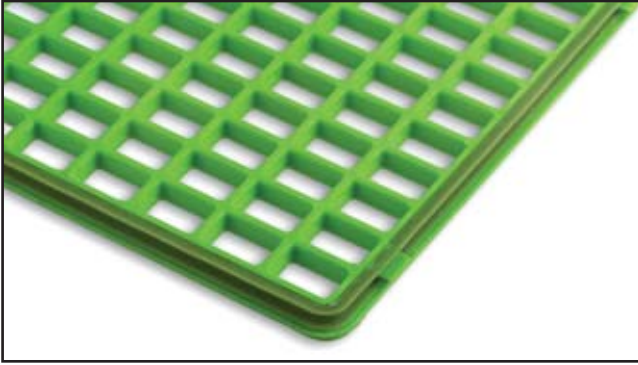
**5**



**GM500 cage**  
Max air speed 0.05 m/sec

## Enhanced Containment and Filtration

# 6



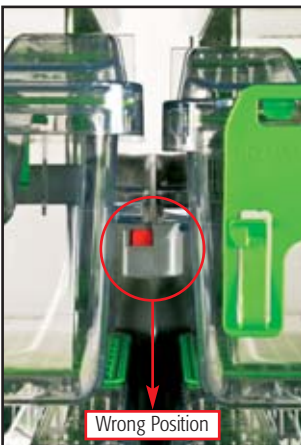
## Easy Access

# 7



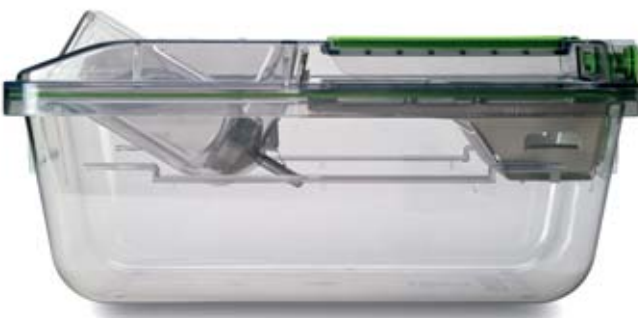
## CSS & Visual Docking Indicator

# 8



## External Self-centering Water Bottle

# 9



## TECHNICAL SHEET

### GM500 cage

**Floor Area:**  
500 cm<sup>2</sup> • 77.5 sq inch

**Overall Dimensions (W x D x H):**  
372 x 199 x 130 mm • 14.65 x 7.83 x 15.12 inch

**Plastic Type:**  
H-TEMP (Polysulfone) / Clear H-TEMP: 3 years warranty  
XTEMP (Polyphenilsulfone): 8 years warranty

**Cage Body:**  
Radial silicon gasket (occlusive seal); High stackability; Simmetric (no back no front)

**Lid:**  
Half wire bar lid style

**Feeder Capacity:**  
0.5 l • 16.91 fl oz (US) • 17.60 fl oz (UK)

**Top:**  
Filter retainer with silicon gasket; Selfcentering indentation for external water bottle

**Water Bottle:**  
260 ml • 8,80 oz (US) • 9,15 oz (UK) capacity  
External with Oring for perfect sealing

**Cage Filter Efficiency:**  
Microbiological filter (0.2 micron pore size)  
Bacterial and Virus Filtration Efficiency (BFE and VFE) ≥ 99.999%

### AERO rack

Cat. N.	Configuration	Specie	Overall Dimensions (L x W x H) - mm / inch
AERO60	60 cages (6 w x 10 h) Single sided	Mouse	1305 x 540 x 1995 (+81*) / 51.38 x 21.26 x 78.54 (+3.19*)
AERO70	70 cages (7 w x 10 h) Single sided	Mouse	1512 x 540 x 1995 (+81*) / 59.53 x 21.26 x 78.54 (+3.19*)
AERO80	80 cages (8 w x 10 h) Single sided	Mouse	1719 x 540 x 1995 (+81*) / 67.68 x 21.26 x 78.54 (+3.19*)
AERO120	120 cages (6 w x 10 h) Double sided	Mouse	1305 x 887 x 1995 (+97*) / 51.38 x 34.92 x 78.54 (+3.82*)
AERO140	140 cages (7 w x 10 h) Double sided	Mouse	1512 x 887 x 1995 (+97*) / 59.53 x 34.92 x 78.54 (+3.82*)
AERO160	160 cages (8 w x 10 h) Double sided	Mouse	1719 x 887 x 1995 (+97*) / 67.68 x 34.92 x 78.54 (+3.82*)

\* Removable supply plenum

## Easy & Smart Flow

# 10



- Energy-saving and Eco-compatible.
- Light and ergonomic.
- Safe for animals/operators/ environment.
- User firendly.
- Multilinking: one AHU serves up to four racks.
- High monitoring and security: Remote Alarm System (RAS) and Wireless Data Management (WDM).



## Options

### For Cage:

- Cage body with grommet, for auto watering.
- "Unihand" Cage body (button free in the front) for single hand procedures.
- "Unihand" Cage body with grommet, for auto watering.
- Full length wire bar lid with food hopper and bottle in the front, internal bottle.
- Full length wire bar lid with external bottle in the front and food hopper in the back.
- Flat top without bottle indentation, for auto watering.
- Top with depression for disposable pouches.
- Vertical or Horizontal flip up plastic card holder.

### For Rack:

- Rack with automatic watering system
- Quick disconnecting magnetic joints (connecting AHU to rack or rack to rack)  
Flexible hoses (available in several lengths).

## Accessories

- Mouse Balcony.
- Mouse Loft.
- Mouse House.

**H-TEMP Polysulfone (PSU) cages are guaranteed for 3 years from the date stamp. This plastic is highly resistant, it can be autoclaved at 134° C / 273° F. Considering an average of one autoclaving cycle per week, the 3 years of warranty are comparable to at least 150 cycles.**

### H-TEMP is available as:

- NATURAL COLOUR.
- CLEAR COLOUR.

**X-TEMP Polyphenilsulfone (PPSU) cages are guaranteed for 8 years from the date stamp. This plastic is highly resistant, it can be autoclaved at 134° C / 273° F. Considering an average of one autoclaving cycle per week, the 8 years of warranty are comparable to at least 400 cycles.**



## TECNIPLAST

### HEADQUARTERS

ITALY | Tel. +39 0332 809711 • www.tecniplast.it • E-mail: tecnicom@tecniplast.it

### SISTER COMPANIES

AUSTRALIA/NEW ZEALAND | Tel. + 61 2 8845 6500 • www.tecniplast.it • E-mail: info@tecniplast.com.au

FRANCE | Tel. 04 72 52 94 41 • www.tecniplast.fr • E-mail: info@tecniplast.fr

GERMANY | Tel. 08805 921320 • www.tecniplast.de • E-mail: info@tecniplast.de

UNITED KINGDOM | Tel. 0845 0504556 • www.tecniplast.it • E-mail: info@tecniplastuk.com

JAPAN | Tel. + 03 5770 5375 • www.tecniplast.it • E-mail: info@tecniplastjapan.co.jp

USA/CANADA | Toll Free: 877.669.2243 • www.tecniplastusa.com • E-mail: info@tecniplastusa.com

To find your local distributor, please visit [www.tecniplast.it](http://www.tecniplast.it)



## Related Products

To maximise operational efficiency and learn more about these products contact your local representative.



### CS5 changing station.

Compact and light double side mobile Changing Station that allows the user to easily move the cabinet inside the animal room.



### Logistic trolleys offer

safety and ergonomic features that enable high load-density for moving cages and bottles, crates, pallets and covers.



### 900 GP Series Rack

Washer: designed specifically to meet the throughput needs of medium to large size facilities, these machines will live up to your highest expectations in terms of maximum cleaning efficiency, safety, environmental impact and quality construction.