



**Sealsafe<sup>plus</sup>**

MOUSE IVC GREEN LINE

- Improved cage density means housing up to 107 cages per square metre
- Exceptional filtration protects both inhabitants and facility staff
- Save as much as 25% of the time needed for cage change-out
- Visibility is increased and weight has been reduced with the half-lid wire bar
- Constant environmental conditions mean best science.



*"A fantastic IVC experience featuring an incredible cage density and recognition of mouse & human welfare which gives us confidence in the future".*



**HOUSING**



**TECNIPLAST**

*innovation through passion<sup>SM</sup>*

## 1/Enhanced Density

The system features both a new cage base and specially designed low-profile top enabling ten rows of housing under 2 metres tall.

## 2/Cage Airflow Design

A preference test has demonstrated that mice prefer cages having the air supply in the cover to that in the wall. Inlets in the wall of the cages blow the air in at animal height, the situation in newer types of IVC seems to provoke less uncomfortable conditions\*.

## 3/Cage Self-Locking System (CSS) & Visual Docking Indicator

Our rack runners have built-in stoppers that fit the stopping lugs precisely, so each cage stops and locks silently into place automatically - and almost effortlessly. A visual indicator flags any cage that is not fully docked. When a cage is fitted properly into the rack, the flag disappears from view. (No flag? No problem!).

## 4/Improved Access

We make our tops latch-free so opening requires a simple press on the cage's front button to lift up the top. Our half-lid wire bar enables full access to each cage's contents.

## 5/External Water Bottle

The top features an indentation that guides precise placement of each bottle. You can remove or change bottles without disturbing, or stressing, the animals.

## 6/Enhanced Containment

The cage body features a silicone gasket that fits snugly around the base, assuring ideal containment when the top is fitted and locked in place. This means that even when running in positive pressure, laboratory allergens are contained, protecting both your staff and researchers in your facility.

## 7/Seal and Filter

The silicone sealing gasket features a lip that accepts the cage top, ensuring an occlusive seal. A large square 0.2 micron filter area on the top of the cage also ensures the safety of inhabitants in case of power failure without compromise of protection.

## 8/Animal Welfare

The cage and the system are designed to provide the best possible micro-environment for each animal. We define cage comfort as:

- Noise level below 50dBA.
- No ultrasound emission.
- Air speed of less than 0.2 m/sec at animal level.

## 9/Easy & Smart Flow: the latest generation of Air Handling Units

Easy Flow and Smart Flow are the latest generation of air handling units: heat emission is 10% and power consumption 50% less than the old generation of AHUs. Microprocessor driven (Automatic constant flow rate and filter load compensation) they guarantee safety for animals, operators and the environment: Every single air handling unit manufactured is tested for filter integrity and HEPA filtration efficiency through the DOP test. The Easy flow is optimal in terms of simplicity of use. The Smart Flow features a new generation of touch screen control panels offering advanced setting features and enhanced flexibility.



# HOUSING

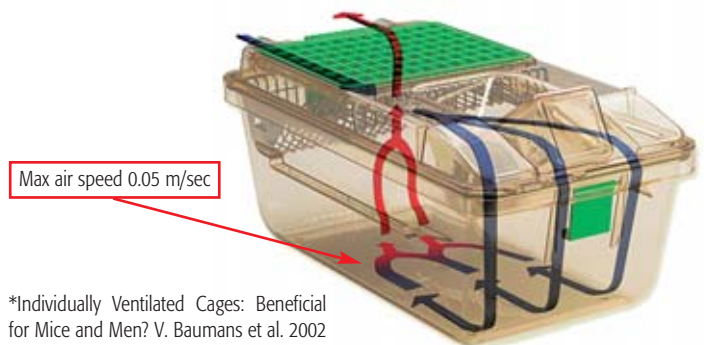
## Sealsafe® PLUS Mouse

**Sealsafe® PLUS Mouse:** The cage design has been specifically developed to reduce operational costs. Tecniplast cage owners report a 40% reduction in operational costs over other brands. This results in labour savings, reduced environmental impact, and lower consumption of both water and energy.

### Enhanced Density

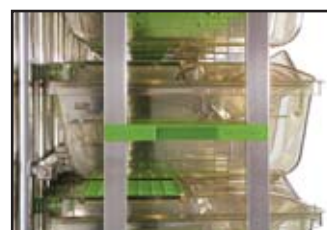


### Cage Airflow Design



\*Individually Ventilated Cages: Beneficial for Mice and Men? V. Baumans et al. 2002 Contemporary Topics. Vol.41:13-19.

### Cage Self-Locking System (CSS) & Visual Docking Indicator



## Improved Access **4**



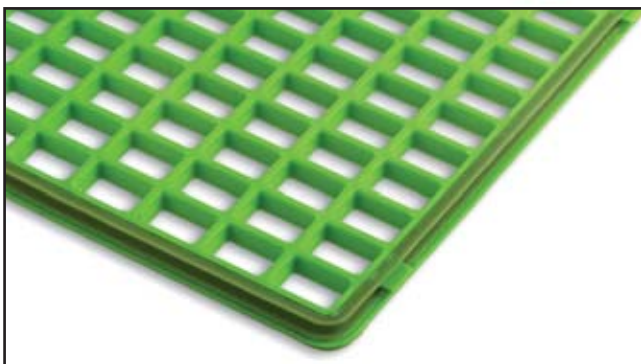
## External Water Bottle **5**



## Enhanced Containment **6**



## Seal and Filter **7**



## TECHNICAL SHEET

### Sealsafe® Cages

Rack	Sides	Overall Dimensions (L x W x H) - mm / inch
2GM 60	S	1314 x 500 x 1995 (2086,7) / 52" x 20" x 79" (82" 1/8)
2GM 70	S	1528 x 500 x 1995 (2086,7) / 61" x 20" x 79" (82" 1/8)
2GM 80	S	1742 x 500 x 1995 (2086,7) / 69" x 20" x 79" (82" 1/8)
2GM 120	D	1314 x 888 x 1998 (2102,5) / 52" x 35" x 79" (82" 3/4)
2GM 140	D	1528 x 888 x 1998 (2102,5) / 61" x 35" x 79" (82" 3/4)
2GM 160	D	1742 x 888 x 1998 (2102,5) / 69" x 35" x 79" (82" 3/4)

### TouchSLIM™

Overall Dimensions (L x W x H): 480 x 550 x 1954 mm / 19" x 22" x 77" inch

Heat Loss: Max 406 BTU/h

Electrical Consumption: 1A at 200 m<sup>3</sup>/h 230V • 2A at 200 m<sup>3</sup>/h 115V

Maximum Air Flow: 200 m<sup>3</sup>/h

Note: English Dimensions rounded up to nearest whole number.

## Animal Welfare **8**



## Easy & Smart Flow **9**



- Energy-saving and Eco-compatible.
- Light and ergonomic.
- Safe for animals/operators/ environment.
- User friendly.
- Multilinking: one AHU serves up to four racks.
- High monitoring and security: Remote Alarm System (RAS) and Wireless Data Management (WDM).



## Options

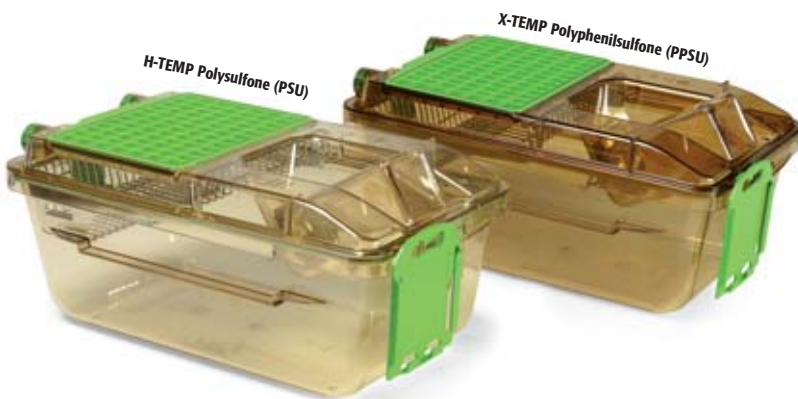
- Cage body with grommet, for auto watering.
- Cage body with one button, to allow single-hand procedures.
- Flat top, without bottle indentation, for use with auto watering systems.

## Accessories

- The MOUSE HOUSE provides a complex three-dimensional environment, within standard laboratory caging. Tests have shown that use of the MOUSE HOUSE reduces perceived negative behaviour patterns and increases positive ones.
- With MOUSE LOFT™ you can easily observe animals without having to disturb them. The elevated surface actually expands the amount of roaming area, providing more room from the same space. (Limited availability. Please contact your local representative for availability).

**Sealsafe Plus cages are made of H-TEMP Polysulfone (PSU) caging, guaranteed for 3 years from the date stamp. This plastic is highly resistant, it can be autoclaved at 134° C/273° F. Considering an average of one autoclaving cycle per week, the 3 years of warranty are comparable to at least 150 cycles.**

**Sealsafe Plus cages are made of X-TEMP Polyphenilsulfone (PPSU) caging, guaranteed for 8 years from the date stamp. This plastic is highly resistant, it can be autoclaved at 134° C/273° F. Considering an average of one autoclaving cycle per week, the 8 years of warranty are comparable to at least 400 cycles.**



## Related Products

To maximise operational efficiency and learn more about these products contact your local representative.



**CS5 changing station.** Compact and light double side mobile Changing Station that allows the user to easily move the cabinet inside the animal room.



**Logistic trolleys** offer safety and ergonomic features that enable high load-density for moving cages and bottles, crates, pallets and covers.



**The 400 series cabinet washer.** The compact and inexpensive solution for small animal facilities or start-up operations washing cages, bottles and similar items.

**TECNIPLAST™**

HEADQUARTERS

ITALY | Tel. +39 0332 809711 • www.tecniplast.it • E-mail: tecnicom@tecniplast.it

SISTER COMPANIES

AUSTRALIA/NEW ZEALAND | Tel. + 61 2 8845 6500 • www.tecniplast.it • E-mail: info@tecniplast.com.au

FRANCE | Tél. 04 72 52 94 41 • www.tecniplast.fr • E-mail: info@tecniplast.fr

GERMANY | Tel. 08805 921320 • www.tecniplast.de • E-mail: info@tecniplast.de

UNITED KINGDOM | Tel. 0845 0504556 • www.tecniplast.it • E-mail: info@tecniplastuk.com

JAPAN | Tel. + 03 5770 5375 • www.tecniplast.it • E-mail: info@tecniplastjapan.co.jp

USA/CANADA | Toll Free: 877.669.2243 • www.tecniplastusa.com • E-mail: info@tecniplastusa.com

To find your local distributor, please visit [www.tecniplast.it](http://www.tecniplast.it)



ISO-9001 - Cert. n° 0875



ISO-14001 - Cert. n° 0256A/0

