

# INTERACTIVE SafeChange™ Station

## TECHNICAL FEATURES

- **Interactive SafeChange Station New Style (code 9CACGBH02A):**  
220 / 240V monophase - 50 Hz
- **Interactive SafeChange Station New Style with Knee-Rest Panel (code 9CACGBH02AK):**  
220 / 240V monophase - 50 Hz
- **Interactive SafeChange Station New Style (code 9CACGBH02AUS):**  
115V monophase - 60 Hz (voltage USA version)
- **Interactive SafeChange Station New Style with Knee-Rest Panel (code 9CACGBH02AKUS):**  
115V monophase - 60 Hz (voltage USA version)
- **Overall Dimensions:**  
mm 1300 ( w ) x 840 ( d ) x 1980 / 2250 ht ( lower position / higher position )
- **Working Area:**  
mm 1130 ( w ) x 600 ( d ) x 620 ( ht )
- **Front opening access:**  
mm 1050 x 290 ( ht )
- **Net Weight:**  
Kg 190
- **Supply Air Volume per hour:**  
980 m<sup>3</sup> / h
- **Exhaust Air Volume per hour:**  
2300 m<sup>3</sup> / h
- **Noise Level:**  
< 62 dBA

## OPTIONAL ITEMS

9CACGBH02AP	Removable front closure panel
9CACGBH02APUV	Removable front closure panel with UV lamp
9CACGBH02AKP	Knee Rest Panel
9CACGBHSS	Clean Jet

### SPECIAL NOTE:

*Since this unit only provides partial containment, its adequacy for working with biohazardous materials should be determined by a safety officer or other qualified individual.*

*This unit is not intended to be used with toxic, flammable or explosive substances.*

## TECNIPLAST

Headquarters and Italian operations:  
TECNIPLAST S.p.a. • Italy  
Tel. +39 0332 80 97 11 • Fax +39 0332 45 83 15  
www.tecniplast.it • E-mail: tecnicom@tecniplast.it

TECNIPLAST DEUTSCHLAND GmbH  
Tel. 08805 921320 • Fax 08805 9213299  
E-mail: info@tecniplast.de • http://www.tecniplast.de

TECNIPLAST UK Ltd.  
BCM Box 3058 • London WC1N 3XX • Tel. 0845 0504556  
Fax 0845 0505557 • E-mail: info@tecniplastuk.com

TECNIPLAST FRANCE S.A.  
Lyon • Tel. 04 72 52 94 41 • Fax 04 72 17 02 66  
http://www.tecniplast.fr

TECNIPLAST USA Inc.  
P.O. Box 1457 • Exton, PA 19341  
Toll Free (U.S. & Canada): 877.669.2243  
E-mail: info@tecniplastusa.com • http://www.tecniplastusa.com

TECNIPLAST AUSTRALIA Pty. Ltd.  
P.O. Box 41, Rydalmere BC Australia 1701  
Tel. + 61 2 8845 6500 • Fax + 61 2 8845 6505  
E-mail: info@tecniplast.com.au

For other countries please consult our web site: [www.tecniplast.it](http://www.tecniplast.it).



CAT039/BING - 12/07 - REV.01

# INTERACTIVE SafeChange™ Station

## WE'LL GO TO ANY HEIGHT TO PROTECT YOU!



## TECNIPLAST

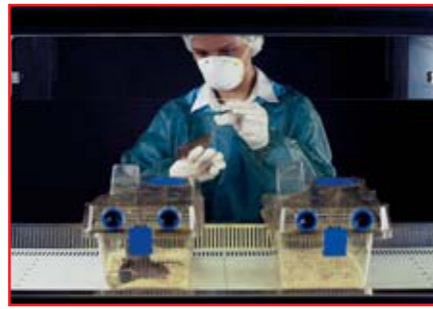
innovation through passion™

## DUAL PROTECTION

**Protection** must always be **dual** since both your animals and staff need to be kept safe. Allergic reactions to animals are among the most common conditions that adversely affect the health of workers involved in the care and use of animals in research.

An estimated 10% of laboratory workers eventually develop occupation-related asthma and therefore attention should always be given to improve work practices, personal protective equipment and complementary material.

Tecniplast Interactive SafeChange™ station is an outstanding choice for critical cage changing operations that require dual protection, complying with Class II, Type B2 requirements for Biological safety cabinets.



Side lights to give full visibility to the user

The unit features an electronic self-adjusting fan system keeping the air-flow constant in the work chamber to offset the effects of the gradual clogging of the HEPA filter. Our easy to use **control panel** displays air-flow levels at the barrier and within the working area, giving an acoustic and visual alarm signal whenever readings decrease below the pre-set threshold.



## AUTO LIFT

Our unit offers an adaptive ergonomic design, featuring **adjustable working height** (smooth and silent hydraulic lift system) ranging from 890 up to 1160 mm, just at the press of a button! This creates a safe, comfortable and convenient work area which improves staff performance and productivity.



## DOUBLE FRONT ACCESS

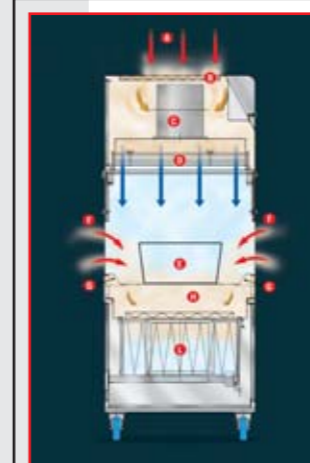
Tecniplast Interactive SafeChange Station features remarkably compact size, relatively light weight, **unique manoeuvrability** and 4 clear sides for improved visibility. All provide significant labour saving by wheeling the unit alongside the racks, instead of transferring thousands of cages to a fixed bench unit located in the far corner of the room!

Adequate working area and **double-side** access result in effective face to face operation for procedures which require two technicians working together or at the same time, whilst maintaining total animal protection. Moreover the double openings allow operator to switch immediately from one rack to the opposite without turning the unit around in tight space.



## CLEAN JET

The Clean Jet senses the presence of the user's hand thanks to a proximity detector and automatically atomizes an alcohol-based solution to allow no-contact hand disinfection. The Clean Jet can be easily interlocked also with the sliding bar on the side of the Interactive SafeChange Station™.



Interactive Safechange™ station provides a safe cross-contamination free work area for handling animals and protects operator and environment from exposure to allergens by a very strong frontal air barrier.

Interactive SafeChange™ station comply with the European norm for class II biohazard cabinets EN 12469.

Our units are all tested (in compliance with the requirements of ISO 14644-1 and CEI-EN-61010) and an individual certificate is issued and delivered together with the operating manual.

## H<sub>2</sub>O<sub>2</sub> STERILIZATION

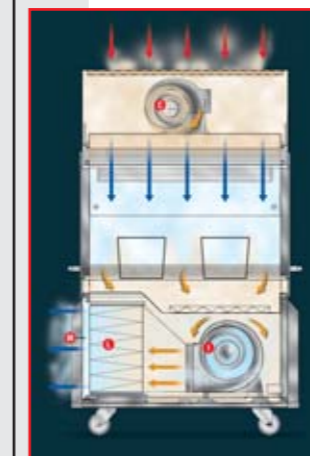
Interactive SafeChange™ stations can be decontaminated with H<sub>2</sub>O<sub>2</sub> sterilization cycles. This cabinet can be decontaminated *in situ* with a hydrogen peroxid generator.



An ergonomic knee rest panel makes for greater operator comfort when seated.



The Pre-Filter is easily accessible by removing the two frames that compose the work surface.



## HOW IT WORKS

The upper supply fan **C** pressurises and forces air through an HEPA filter **D** creating a **unidirectional downward laminar flow** (Airborne Particulate Cleanliness Class ISO 5, according to ISO 14644-1).

This constant sterile flow will protect cage occupants **E** from contaminated working shelf and particles coming from the room or brought inside the cabinet by the staff.

The lower exhaust fan **I**, on the other hand, draws contaminated air from the work area and make-up air from the local environment through the front bulkhead slots **G**. The air is then pulled through the pre-filter **H** and second HEPA filter **L** before being released back into the environment through the expulsion grill **M**.

This will create an **air barrier (velocity 0,6 m/sec) F** at both work space openings preventing any passage of contaminated aerosols from the interior of the unit to the external local environment.

Clean HEPA Filtered Air

Room Air

Mixed Room and HEPA Filtered Air